

NOTES ON A FEW AMPHOROPHORA (APHIDIDÆ)  
OF UTAH

BY GEORGE F. KNOWLTON

*Utah Agricultural Experiment Station**Logan, Utah*

The suggestion of Mason\* that this group may not be a phyleogenetic unit, is undoubtedly correct. Until a more natural grouping is found it will be convenient to place certain forms here.

The writer wishes to thank Mr. P. W. Mason for his opinion regarding Utah material in this group.

***Amphorophora nigricornis* Knowlton, n. sp.**

Taken September 3, 1925, at Fielding, Utah, on *Polygonum persicaria*. This black aphid resembles *Amphorophora nabali* Oestlund in many respects, but differs in having fewer sensoria on antennal IV, and none on V, lacking pronounced constriction to long narrow cauda, and having a darker-colored body.

*Alate vivipara*. Head and thorax black; length 2.5 mm.; rostrum dark at distal end, reaching second coxa; antennal tubercles fairly prominent; antenna black and sensilla usually finger-like; antennal III, 0.75 mm. long, tuberculate, due to the very numerous sensoria; IV, 0.42 mm.; with four to eight sensoria; V, 0.37 mm., lacking secondary sensoria; VI, 1.07 (0.1 + 0.97) mm.; legs rather long, mostly black; wing venation typical, veins dark; abdomen blackish, without lateral tubercles; cornicles black, 0.55 mm. long, distal half swollen to twice the diameter of narrowest part, and enlarged again toward body; cauda long, black, very slightly constricted near base, with a row of four hairs on each side.

Taken in Smithfield Cañon, Utah, on August 24, 1925. On underside of leaf of birch (*Betula fontinalis*) at an elevation of 6000 feet. Named for Mr. D. G. Hall, Jr., who accompanied the writer during the summer of 1925 in a survey of much of Utah, southern Idaho, and northern Arizona.

***Amphorophora halli* Knowlton, n. sp.**

*Alate vivipara*. Yellowish-green body, 2.35 mm. long; rostrum scarcely reaching second coxa; antennal tubercles prominent; antenna and head armed with globate to finger-like sensilla; antennal VI, most of III and distal part of IV and V, black; III, 0.74 mm. long,

---

\*Mason, P. W. (1925). A Revision of the Insects of the Aphid Genus *Amphorophora*, Proc. U. S. Natl. Mus., Vol. 67, Art. 20, p. 4.

with nineteen to twenty secondary sensoria in a row; IV, 0.54 mm., lacking sensoria; V, 0.53 mm.; VI, 1.2 (0.18 + 1.02) mm.; first antennal slightly gibbus on inner surface; legs moderately long; wings long, venation normal with basal veins darker than Rs. or media, and with slight shading at ends of veins; cornicles 0.78 mm. long, swollen on inner distal half, black at distal end with moderate flange; cauda long, conical, very slightly narrowed near base, with two hairs on each side and one dorsal.

#### AMPHOROPHORA NERVATA (Gillette)

This rather small aphid is frequently encountered in Utah on cultivated and wild roses. Collections have been made from Benjamin, Brighton, Logan Cañon, Payson, Salt Lake City, Smithfield Cañon, and Spanish Fork. During the summer of 1925 it was present in damaging numbers on the younger leaves at Logan and at Spanish Fork.

#### AMPHOROPHORA RUBI Kaltenbach

A few specimens of this aphid were collected on strawberries at Morgan, June 30, 1925.

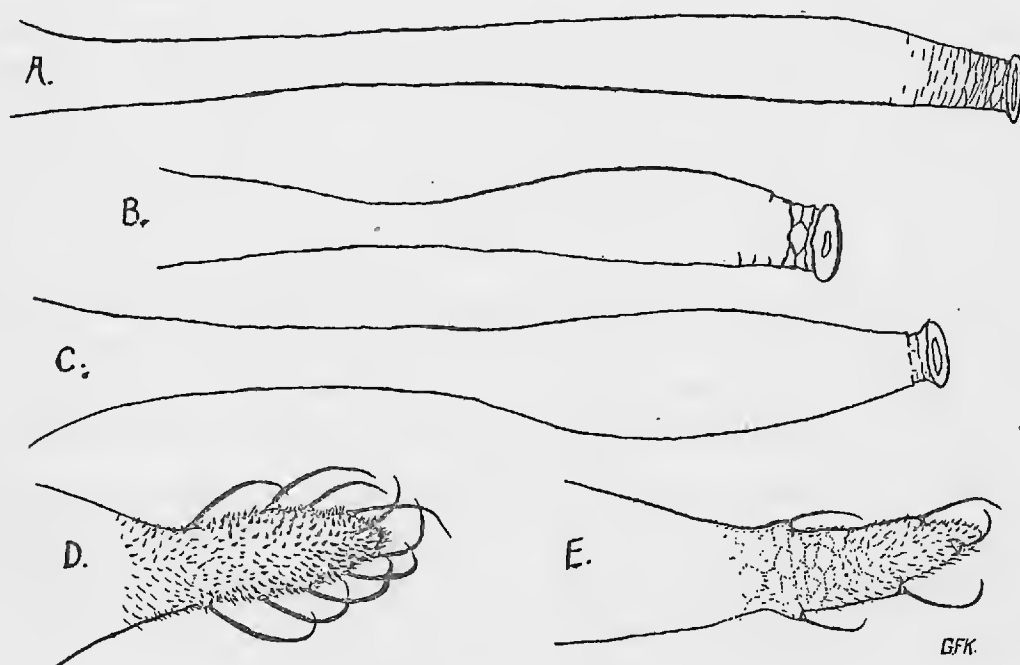


FIGURE 1

A, cornicle of alate *Amphorophora nervata* (Gillette); B, cornicle of alate *A. nigricornis* n. sp.; C, cornicle of alate *A. halli* n. sp., D, cauda of alate *A. nigricornis* n. sp.; E, cauda of alate *A. halli* n. sp.